

Labour Market Information

*LMI obtained from the Office for National Statistics and Gov.uk. Last updated January 2020

Buckinghamshire LEP

Aylesbury Vale, Chiltern, Wycombe & South Bucks

Employment



UK - 76.3%
LEP - 80%

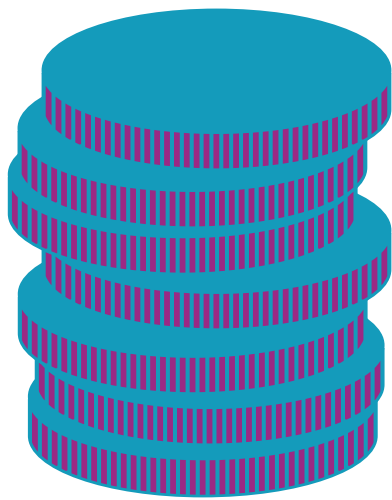
16-64 year old population = 327,700

Unemployment



UK - 3.8%
LEP - 3%

Salary



UK Average - £30,414
LEP Average - £33,436

Self-Employment



15.3%

50,400 people in the region
are self-employed

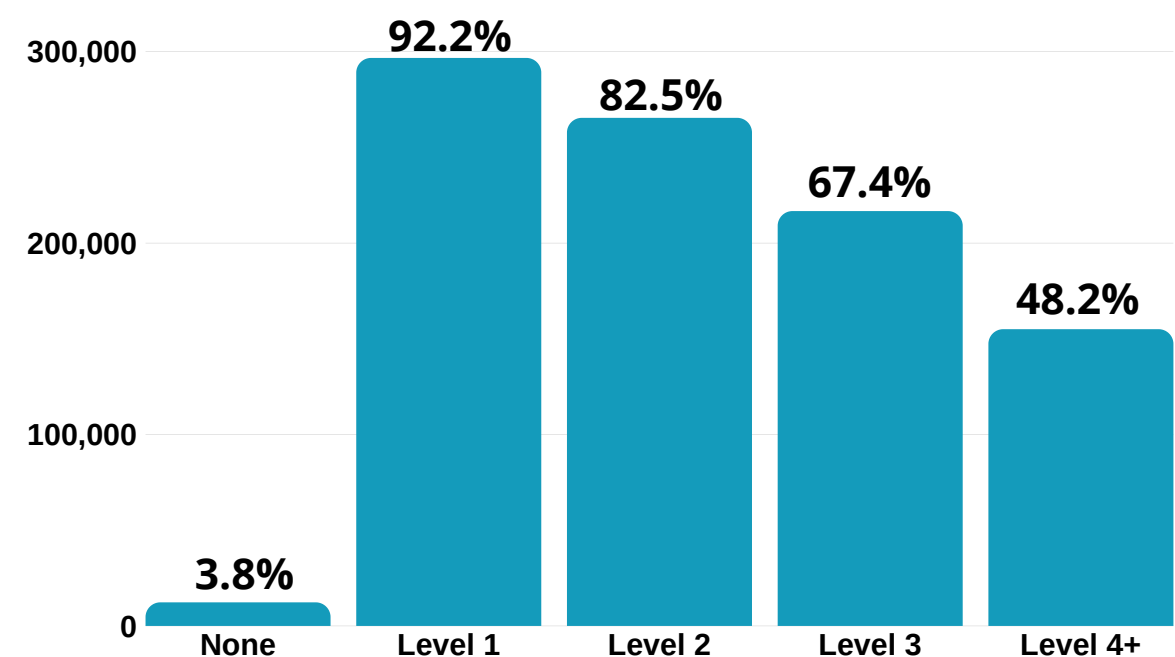
Growth by job sector by 2022

- Construction
- I.T and Cyber Security
- Support/Customer Services
- Management and Directors
- Professional Services



Qualification levels

265,300 people have at least a level 2 qualification such as GCSEs or an NVQ.



Where do people work right now?

Most jobs

- Wholesale & Retail - 44,000 (18.9%)
- Health & Social Care - 28,000 (12%)
- Administration - 23,000 (9.9%)
- Science & Technology - 23,000 (9.9%)
- Education - 20,000 (8.6%)

Fewest jobs

- Finance & Insurance - 4,500 (1.9%)
- Real Estate - 4,000 (1.7%)
- Water, Sewerage & Waste - 2,250 (1%)
- Electricity, Gas & Air - 150 (0.1%)
- Mining, Quarrying & Utilities - 5 (0.001%)

Did you know...

The NHS is the UK's biggest employer, and the 5th biggest employer in the world!

What are the region's biggest companies to work for?

